

Understanding 2016–17 PSAT 8/9 Results

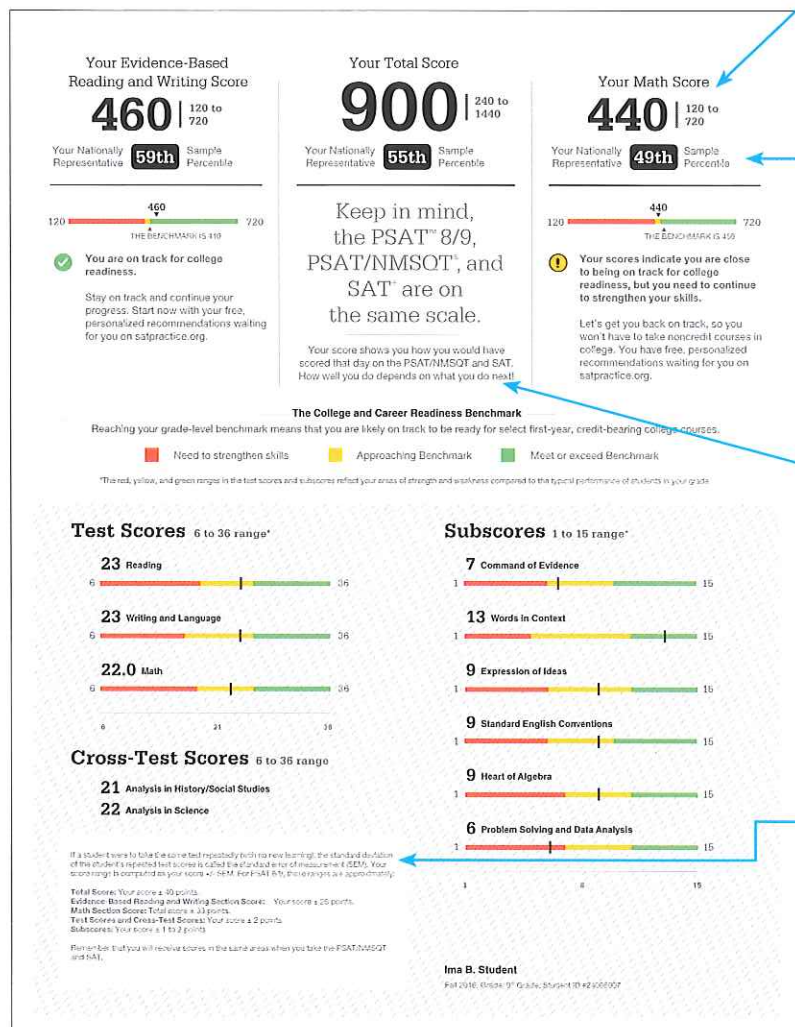
A PARENT TUTORIAL

A Case Study: Ima B. Student's PSAT 8/9 Score Report

Take a look at Ima B. Student's Sample Score Report below and on the next page. Use the corresponding information to help you interpret your student's PSAT™ 8/9 Score Report.

What Are Ima's Scores?

Ima's Evidence-Based Reading and Writing score is 460 and Math is 440. In Evidence-Based Reading and Writing, Ima's score exceeds the benchmark, and she is on track for college readiness. In Math, Ima is close to meeting the benchmark. Test scores, cross-test scores, and subscores can give Ima a better understanding of areas to work on.



What Are Her Score Percentiles?

Because Ima is in the ninth grade, the percentiles compare her scores with those of all ninth graders in the nation. Ima scored as well or better than 59% of a nationally representative group of ninth-grade students in Evidence-Based Reading and Writing. In Math, she scored as well or better than 49% of a nationally representative group of freshmen. Additional percentiles are available in Ima's online score report.

How Will Ima Do on the SAT?

The PSAT 8/9, PSAT/NMSQT®, and SAT® are scored on a common scale. Therefore, if Ima had taken the SAT instead of the PSAT 8/9 on the same test date, she would have received the same score. By the time Ima takes the SAT, she will likely have had additional learning from school and practice. Her PSAT 8/9 results can help Ima focus her efforts in high school to be better prepared for the SAT.

What Are Her Score Ranges?

No test measures precisely what someone knows, and many factors can affect results. That is why test makers think of each score as a range that extends from a few points below to a few points above the score earned.

Your Scores: Next Steps

Additional skills and improvement suggestions can be found in your online score report.

Your score indicates that you are already likely able to:

- Draw reasonable conclusions from somewhat challenging texts
- Describe the overall structure of a somewhat challenging text
- Identify claims and counterclaims explicitly stated in a somewhat challenging passage
- Revise text as needed to improve the clarity or content appropriateness of word choices within somewhat challenging texts

Reading Test

23
6 to 36

Improve your skills by focusing on the following suggestions:

- Draw reasonable inferences and logical conclusions from challenging texts
- Analyze information presented quantitatively in such forms as graphs, tables, and charts, and relate that information to information presented in somewhat challenging text
- Determine how the selection of specific words shapes meaning and tone in a challenging passage
- Use a variety of sentence structures to accomplish a rhetorical purpose such as persuading an audience
- Retain or add information or ideas to a piece of text to support claims or points in challenging text

Writing and Language Test

23
6 to 36

- Revise text as needed to improve the clarity or content appropriateness of word choices within somewhat challenging texts
- Retain or add information or ideas to a piece of text to support claims or points in somewhat challenging text
- Revise somewhat challenging text to ensure that information is presented in the most logical order
- Revise text as needed to improve the clarity or content appropriateness of word choices within somewhat challenging texts

Math Test

22.0
6 to 36

- Interpret a linear function in one variable with rational coefficients that represents a context. Select the segment of a line of best fit and interpret the slope and intercept of a line in the context of the situation (when a linear model is appropriate)
- Interpret sample statistics understanding and using margin of error
- Apply and interpret a quadratic function or equation that represents a context and requires multiple steps
- Calculate and interpret frequency distributions using tables and other representational methods
- Determine how a graph may be affected by a change to an equation
- Determine the value of a constant or coefficient for an equation with no solution or infinitely many solutions
- Using a specified model, make a prediction or compare the predicted values with the actual values in the data set
- Within a context, compare the center of two separate data sets with different spreads
- Determine whether two events are independent given their probabilities
- Use a variety of sentence structures to accomplish a rhetorical purpose such as persuading an audience

Get more next steps online
studentscores.collegeboard.org

- Free Practice**
Develop the skills you'll need for high school and beyond with Khan Academy™ - free online on satpractice.org.
- Core Course Work**
Use your results to create a core course work plan in high school.
- Explore**
Discover majors and careers that connect to the things you care about most with Roadtrip Nation.

Ima B. Student Fall 2014 Grade 10/Grade 11

How Can Ima Improve Her Academic Skills?

Your Scores: Next Steps are based on her test scores, and the general skills that similarly performing students understand. Ima can see which skills she performed well on and which she needs to improve. Ima can log in to the full report online to see additional skills and improvement steps. (Note that she must be at least 13 years old to do so.) Ima can also link her account to Khan Academy® for personalized practice recommendations.

What Are Ima's Next Steps?

Under **Get more next steps online**, Ima is directed to studentscores.collegeboard.org to learn how to prepare for the SAT with Khan Academy and use her results to create a challenging coursework plan in high school.

Score Report (Page 2 of 3)

How Can Ima Measure Her Progress?

When she becomes a sophomore, Ima can take the PSAT/NMSQT or the PSAT™ 10 to measure the progress she's made since she took the PSAT 8/9. She can take advantage of practice resources by visiting satpractice.org.

What Can We Learn from Ima's Answers?

The score report is designed to help students see how they performed by showing the skill areas covered (subscore and cross-test score), and whether the answer was correct, incorrect, or omitted. For the spring 2017 testing window, the actual questions, answers, and answer explanations won't be provided, and the score report won't include the correct answer column.

Your Question-Level Feedback

Subscore	Cross-Test Score	Writing and Language					Math Test-Calculator					Math Test-No Calculator				
		Questions #	Correct	Your Answer	Difficulty	Subscore	Questions #	Correct	Your Answer	Difficulty	Subscore	Questions #	Correct	Your Answer	Difficulty	Subscore
1	A	✓	WR	ED	WGS	1	A	✓	PS	12	C	✓	WR	ED	WGS	
2	A	✓	WR	ED	WGS	2	C	✓	PS	13	A	✓	WR	ED	WGS	
3	A	✓	WR	ED	WGS	3	C	✓	PS	14	B	✓	WR	ED	WGS	
4	C	✓	WR	ED	WGS	4	D	✓	PS	15	C	✓	WR	ED	WGS	
5	B	✓	WR	ED	WGS	5	B	✓	PS	16	D	✓	WR	ED	WGS	
6	B	✓	WR	ED	WGS	6	C	✓	PS	17	D	✓	WR	ED	WGS	
7	D	✓	WR	ED	WGS	7	D	✓	PS	18	C	✓	WR	ED	WGS	
8	B	✓	WR	ED	WGS	8	B	✓	PS	19	C	✓	WR	ED	WGS	
9	D	✓	WR	ED	WGS	9	B	✓	PS	20	B	✓	WR	ED	WGS	
10	C	✓	WR	ED	WGS	10	C	✓	PS	21	A	✓	WR	ED	WGS	
11	B	✓	WR	ED	WGS	11	C	✓	PS	22	A	✓	WR	ED	WGS	
12	C	✓	WR	ED	WGS	12	C	✓	PS	23	A	✓	WR	ED	WGS	
13	B	✓	WR	ED	WGS	13	B	✓	PS	24	D	✓	WR	ED	WGS	
14	A	✓	WR	ED	WGS	14	A	✓	PS	25	A	✓	WR	ED	WGS	
15	C	✓	WR	ED	WGS	15	C	✓	PS	26	A	✓	WR	ED	WGS	
16	C	✓	WR	ED	WGS	16	B	✓	PS	27	C	✓	WR	ED	WGS	
17	B	✓	WR	ED	WGS	17	A	✓	PS	28	B	✓	WR	ED	WGS	
18	A	✓	WR	ED	WGS	18	C	✓	PS	29	C	✓	WR	ED	WGS	
19	C	✓	WR	ED	WGS	19	D	✓	PS	30	B	✓	WR	ED	WGS	
20	D	✓	WR	ED	WGS	20	B	✓	PS	31	C	✓	WR	ED	WGS	
21	C	✓	WR	ED	WGS	21	C	✓	PS	32	C	✓	WR	ED	WGS	
22	B	✓	WR	ED	WGS	22	C	✓	PS	33	D	✓	WR	ED	WGS	
23	D	✓	WR	ED	WGS	23	A	✓	PS	34	A	✓	WR	ED	WGS	
24	D	✓	WR	ED	WGS	24	D	✓	PS	35	D	✓	WR	ED	WGS	
25	D	✓	WR	ED	WGS	25	A	✓	PS	36	A	✓	WR	ED	WGS	
26	A	✓	WR	ED	WGS	26	A	✓	PS	37	B	✓	WR	ED	WGS	
27	D	✓	WR	ED	WGS	27	C	✓	PS	38	C	✓	WR	ED	WGS	
28	A	✓	WR	ED	WGS	28	B	✓	PS	39	D	✓	WR	ED	WGS	
29	C	✓	WR	ED	WGS	29	C	✓	PS	40	C	✓	WR	ED	WGS	
30	B	✓	WR	ED	WGS	30	A	✓	PS	41	D	✓	WR	ED	WGS	
31	C	✓	WR	ED	WGS	31	C	✓	PS	42	A	✓	WR	ED	WGS	
32	D	✓	WR	ED	WGS	32	C	✓	PS							
33	C	✓	WR	ED	WGS	33	D	✓	PS							
34	B	✓	WR	ED	WGS	34	A	✓	PS							
35	A	✓	WR	ED	WGS	35	D	✓	PS							
36	B	✓	WR	ED	WGS	36	B	✓	PS							
37	B	✓	WR	ED	WGS	37	A	✓	PS							
38	C	✓	WR	ED	WGS	38	D	✓	PS							
39	D	✓	WR	ED	WGS	39	C	✓	PS							
40	D	✓	WR	ED	WGS	40	C	✓	PS							
41	D	✓	WR	ED	WGS	41	D	✓	PS							
42	A	✓	WR	ED	WGS	42	A	✓	PS							

Access Code: A02670146P

See the questions, and the answer explanations, online at studentscores.collegeboard.org

© 2014 The College Board. College Board, SAT, and the acorn logo are registered trademarks of the College Board. PSAT/NMSQT is a trademark of the College Board. PSAT/10 is a trademark of the College Board. PSAT/8/9 is a trademark of the College Board. PSAT/8/9 is a trademark of the College Board. PSAT/8/9 is a trademark of the College Board.

Ima B. Student Fall 2014 Grade 10/Grade 11

Subscore
 COE Command of Evidence
 WR Words in Context
 ED Expression of Ideas
 WC Standard English Conventions
 HCA Heart of Algebra
 PS Problem Solving and Data Analysis
 Cross-Test Score
 HSS Analysis in History/Social Studies
 SCI Analysis in Science

Key
 ✓ Correct
 ✗ Incorrect
 U Unscorable
 B Easy
 M Medium
 H Hard

Score Report (Page 3 of 3)