



THIS IS THE ONLY SCHOOL WE KNOW.
EVERYBODY DOES THIS MANY DRAFTS,
EVERYBODY WORRIES ABOUT QUALITY,
EVERYBODY WORKS HARD.
THIS IS WHAT THIS SCHOOL IS ABOUT.

SEASON 8

Week 35

Monday 5/15

Tuesday 5/16

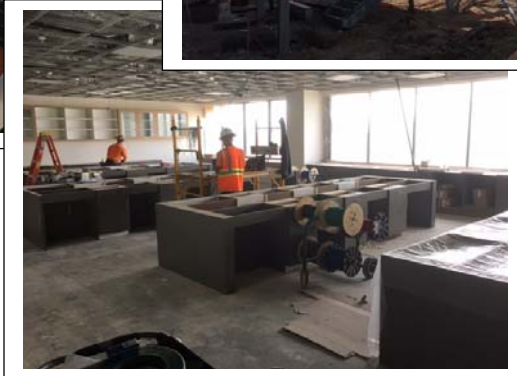
Katie Kondo's birthday

Wednesday 5/17

Thursday 5/18

Friday 5/19 PD Day

Prom 6pm @ Long Beach Renaissance Hotel



THIS WEEK'S STUDENT BIRTHDAYS...

- | | | | |
|----|-------------------|------|------|
| 9 | Natalia Zeledon | 5 15 | 2002 |
| 9 | Dylan Loveland | 5 16 | 2001 |
| 10 | Div Lukic | 5 16 | 2002 |
| 10 | Maya Lurch | 5 16 | 2001 |
| 11 | Juan Ramirez | 5 16 | 2000 |
| 9 | Jenna Primbsch | 5 17 | 2002 |
| 9 | Nathaniel Seekins | 5 18 | 2002 |
| 11 | Michael Go | 5 18 | 2000 |
| 10 | David Plascencia | 5 20 | 2000 |
| 9 | Miles Schubert | 5 21 | 2002 |
| 12 | Peter Lieu | 5 21 | 1999 |

ON THE HORIZON...

Thursday 5/25 @ 4:00pm
 Deadline for Student Work Submissions

- Sun. 5/28 Erin's birthday
- Mon. 5/29 Memorial Day Holiday
- 6/1-6/6 POLs
- Fri. 6/2 Senior Awards Night
- Sat. 6/3 SAT @ DVS
- Tues. 6/6 Rapid Prototyping Day (8-12)
- Tues. 6/6 Graduation 2pm @ ESPAC
- Wed. 6/7 Last day of classes (9-1:30pm)
- Thurs. 6/8 & Fri. 6/9 PD Days
- Sun. 6/11 DVS Staff Reunion BBQ 12pm

Week 35	Monday, 5/15	Tuesday, 5/16	Wednesday, 5/17	Thursday, 5/18	Friday, 5/19
	100 min. classes 70 min. seminar	100 min. classes 70 min. seminar	90 min. classes 30 min. advisory	90 min. classes 30 min. advisory	PD Day
	office hours 8:00-8:50	office hours 8:00-8:50	office hours 8:00-8:50	office hours 8:00-8:50	PD Day 8:00 Staff Meeting 8:30 Job-Alike Teams 10:00 Grade-Level Teams 11:00 Minimizing for the Move DSI
	P1 9:00 – 10:40	P2 9:00 – 10:40	P1 9:00 – 10:30	P2 9:00 – 10:30	
	P3 10:45 – 12:25	P4 10:45 – 12:25	P3 10:35 – 12:05	P4 10:35 – 12:05	
	Lunch 12:25 – 12:55	Lunch 12:25 – 12:55	Lunch 12:05 – 12:35	Lunch 12:05 – 12:35	
	P5 1:00 – 2:40	P6 1:00 – 2:40	P5 12:40 – 2:10	P6 12:40 – 2:10	
P6 POL Prep (script & ppt due) 2:45 – 3:55	P5 POL Prep (script & ppt due) 2:45 – 3:55	Advisory 2:15 – 2:45	Advisory 2:15 – 2:45		
P4 POL Prep (script & ppt due) 2:50 – 3:55	P3 POL Prep (script & ppt due) 2:50 – 3:55				

Week 36	Monday, 5/22 100 min. classes 70 min. seminar	Tuesday, 5/23 100 min. classes 70 min. seminar	Wednesday, 5/24 100 min. classes 70 min. seminar	Thursday, 5/25 100 min. classes 70 min. seminar DEADLINE FOR STUDENT WORK SUBMISSIONS	Friday, 5/26 Trip to Body Worlds (12th) POL Day 1
	office hours 8:00-8:50	office hours 8:00-8:50	office hours 8:00-8:50	office hours 8:00-8:50	Morning Session (email attendance) 8:00 – 12:00
	P1 9:00 – 10:40	P2 9:00 – 10:40	P1 9:00 – 10:40	P2 9:00 – 10:40	
	P3 10:45 – 12:25	P4 10:45 – 12:25	P3 10:45 – 12:25	P4 10:45 – 12:25	
	Lunch 12:25 – 12:55	Lunch 12:25 – 12:55	Lunch 12:25 – 12:55	Lunch 12:25 – 12:55	Lunch 11:30 – 12:30
	P5 1:00 – 2:40	P6 1:00 – 2:40	P5 1:00 – 2:40	P6 1:00 – 2:40	Afternoon Session (email attendance) 12:00 – 4:00
	P2 POL Prep (script & ppt due) 2:45 – 3:55	P1 POL Prep (script & ppt due) 2:45 – 3:55	Advisory POL Prep (CFGs) 2:45 – 3:55	Advisory POL Prep (CFGs) 2:45 – 3:55	

Week 37 – POL Week	Monday, 5/29	Tuesday, 5/30 POL Day 2	Wednesday, 5/31 POL Day 3	Thursday, 6/1 POL Day 4	Friday, 6/2 POL Day 5 Senior Awards Night
	No school – Memorial Day Holiday	Morning Session (email attendance) 8:00 – 12:00	Morning Session (email attendance) 8:00 – 12:00	Morning Session (email attendance) 8:00 – 12:00	Morning Session (email attendance) 8:00 – 12:00
		Lunch 11:30 – 12:30	Lunch 11:30 – 12:30	Lunch 11:30 – 12:30	Lunch 11:30 – 12:30
		Afternoon Session (email attendance) 12:00 – 4:00	Afternoon Session (email attendance) 12:00 – 4:00	Afternoon Session (email attendance) 12:00 – 4:00	Afternoon Session (email attendance) 12:00 – 4:00

Week 38 – POL Week	Monday, 6/5 POL Day 6	Tuesday, 6/6 POL Day 7	Wednesday, 6/7 Last Day – 25 min. classes	Thursday, 6/8	Friday, 6/9
	Morning Session (email attendance) 8:00 – 12:00	Minimum Day *Rapid Prototyping Day* (email attendance) 8:00 – 12:00	P6: 9:00 – 9:25 P5: 9:30 – 9:55 P4: 10:00 – 10:25 P3: 10:30 – 10:55 P2: 11:00 – 11:25 P1: 11:30 – 11:55	No School – Professional Development (grades & comments due by 8am on 6/9)	No School – Professional Development
	Lunch 11:30 – 12:30	Lunch 12:00 – 12:30	Lunch 11:55 – 12:25		
	Afternoon Session (email attendance) 12:00 – 4:00	Graduation @ 2pm	Advisory: 12:30 – 1:10 Backyard: 1:15 – 1:30 Classroom Packing Time or Disneyland Grad Night (Buses leave @ 1:45pm)		



**WE'RE OFF TO 201
N. DOUGLAS AVE!**